

# WAT-1300/CS

1/3.2" Ultra-compact High Sensitivity Day/Night camera

Ultra-compact, lightweight, and low-voltage design ideal for embedded applications

**NEW**

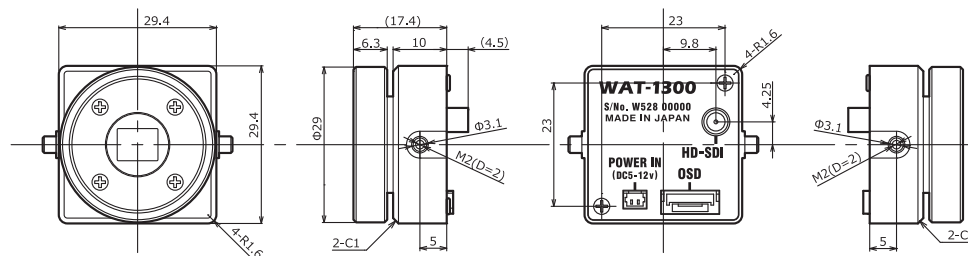


\*NO CE & FCC

## Key features

- HD-SDI 720/60p and 50p output formats enable smooth video recording with minimal delay
- Low power consumption and low heat generation by using a 1 megapixel sensor
- High sensitivity enables clear images even in low-light environments
- Despite its small size, the camera is equipped with a day/night function by using a dual-pass filter
- Advanced setting available by OSD (On Screen Display) through an optional remote control

## Dimensions

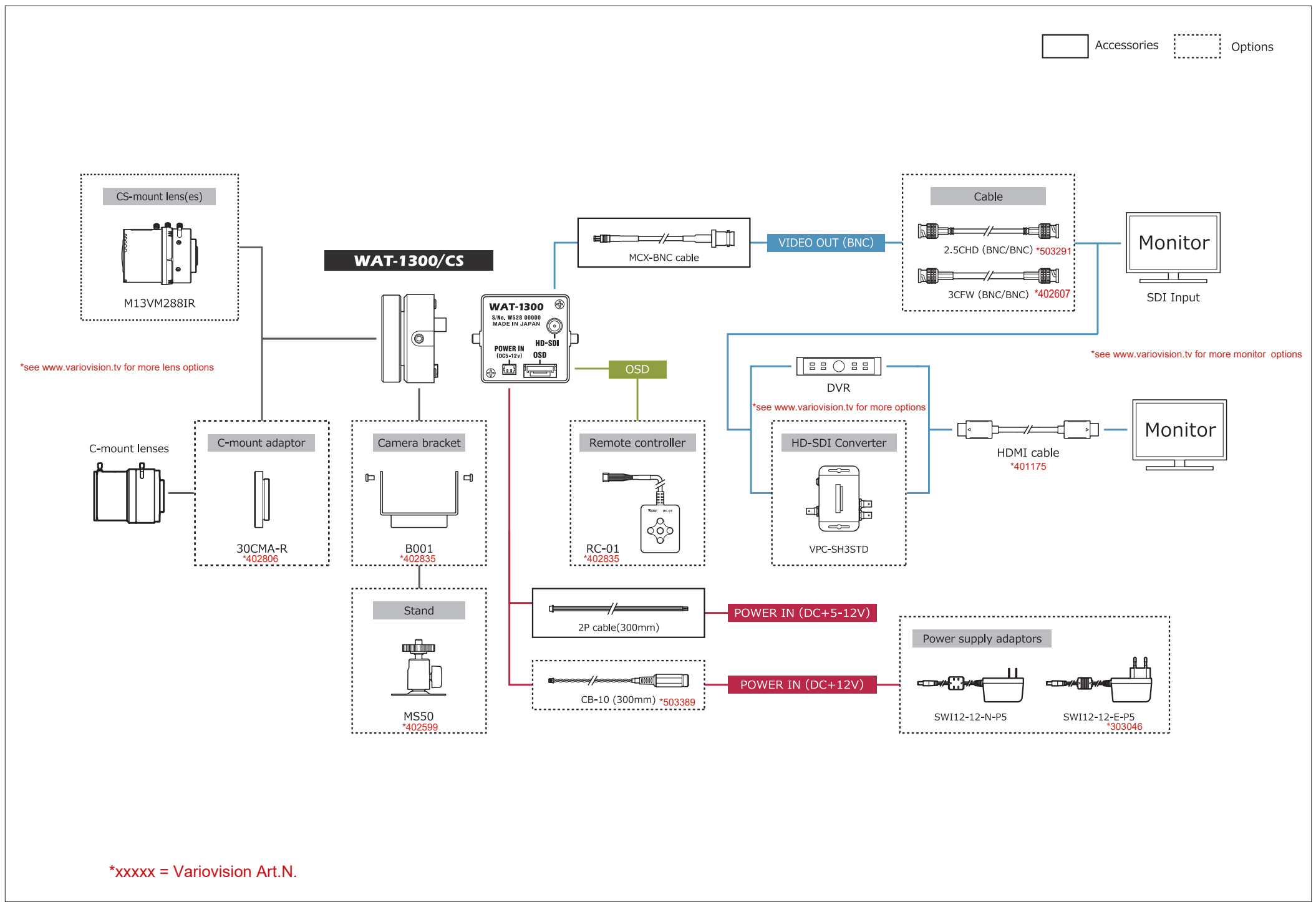


## Specifications

Pick-up element	1/3.2 inch CMOS image sensor	
Number of effective pixels	1280(H) × 720(V)	
Unit cell size	3.5µm(H) × 3.5µm(V)	
Imaging system	RGB+W array mosaic filters on chip	
Synchronizing system	Internal	
Scanning system	Progressive	
Video outputs	HD-SDI	
Output format	720/60p, 720/50p*	
Resolution (H)	More than 650 (Center)	
Minimum illumination	0,002 lx F1.2 (AGC ON=54dB, Shutter=OFF)	
S/N	More than 50dB (AGC OFF=0dB, γ=1.0)	
Function settings	OSD : Remote controller	
AE mode	Fixed	1/60 (1/50), 1/100, 1/120, 1/125, 1/250, 1/500, 1/1000, 1/2000, 1/4000, 1/8000, 1/10000, 1/20000, 1/50000, 1/100000 sec.
	EI	1/60 (1/50) - 1/100000 sec.
White balance	ATW, AWB, PWB, MWB, USER1, USER2	
AGC	ON	0 - 54dB
	OFF	0dB
MGC	0 - 54dB (6dB step)	
Day/Night	ICR mechaless Day/Night	
Gamma characteristics	γ≒0.45	
Noise reduction	2DNR OFF/ON Level adjustable	
Wide dynamic range	WDR OFF/ON Level adjustable, D-WDR OFF/ON Level adjustable	
Lens iris	-	
Back light compensation	BLC, HSBLC	
White blemish correction	-	
Sharpness	Level adjustable	
Defog	OFF/ON Level adjustable	
Digital zoom	-	
Privacy mask	16 masks	
Mirror image	OFF, V-FLIP, H-FLIP, HV-FLIP	
Freeze	-	
Motion detection	-	
Neg.image	-	
Interface	MCX connector (75Ω), 2P connector (Power in), Remote controller (RC-01)	
Power supply	DC+5V - 12V	
Power consumption	0.9W/180mA (DC+5V), 0.9W/75mA (DC+12V)	
Operating / Storage Temperature	-10 - +50°C / -30 - +70°C	
Operating / Storage Humidity	95% RH or less (Without condensation)	
Lens mount	CS mount	
Weight	Approx. 25g	
Accessories	2P cable, MCX-BNC cable	

\*Set at factory

Accessories Options



\*see [www.variovision.tv](http://www.variovision.tv) for more lens options

\*see [www.variovision.tv](http://www.variovision.tv) for more monitor options

\*see [www.variovision.tv](http://www.variovision.tv) for more options

\*xxxxx = Variovision Art.N.